

SUSTAINABLE BUSINESS

Every organisation wants to achieve sustainability – and with new government legislation, it's a requirement.

That's why we're leading the switch from laser printers to our Business inkjet printers.



The WorkForce Pro inkjet range is the new 'triple bottom line' in business printing

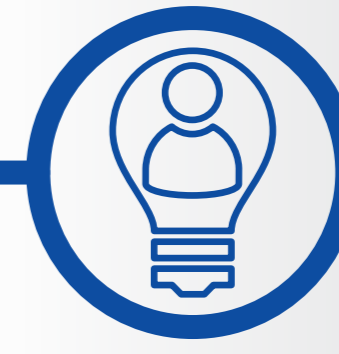
It can improve:



environmental performance



economic performance



societal performance

This is why so many organisations are turning to Epson:



Niedersachsen Justice Ministry is optimising energy efficiency with the addition of 4,000 WorkForce Pro printers



The German Diabetes Clinic needed fast, reliable results with a lower carbon impact – so they installed WorkForce Pro printers



Retailer **Schuhhaus Klauser** had financial and efficiency targets to meet, and is now saving thousands of Euros every year by making the switch



Leading car manufacturer **Mazda** trusted Epson to help reduce energy consumption and optimise staff efficiency

At Epson, we believe that



technology should exist in harmony with ecology to help make a real difference

That's why our WorkForce Pro printers:



Help to cut power consumption by up to

96%

compared to lasers and copiers¹



Reduce physical waste by up to

94%

compared to lasers and copiers¹



Produce up to

92%

fewer CO₂ emissions than those of comparable lasers products²



Emit **Zero ozone gases**

because they require no heat or electrical charge

Learn how your business, and the environment, can benefit if you make the switch to Epson Business inkjet printers

epson.co.uk/maketheswitch

¹ As tested by BLI, over two months to April 2015, against a selection of competing machines, as commissioned by Epson. For more information visit www.epson.eu/inkjetsaving

² Based upon the extraction and processing of raw materials and supplies fabrication. As tested by Epson methodology: 1. Calculation is only CO₂ emission as global warming environmental burden. 2. The results of calculation is based on self-declaration (third-party verification is not received). 3. We use the coefficient of CO₂ (kg-CO₂/unit) published in JEMAI database 'LCA Pro'.

Technology in harmony with ecology



EPSON
EXCEED YOUR VISION